

Grey Balance at Press

I like to start from a known value - Linear Plates - but you don't need to, you can start from your current plate curve. Place the tone scale in the center of the sheet (Enlarge if you like) - include some difficult images to evaluate later.

1- produce "linear" plates with tone scale target included. (Densitometer Status 'T')

2- print to these target densities (WET readings - for COATED) Y-1.03 M1.43 C1.33 K 1.80

Same process for UNCOATED but use these densities Y-.95 M- 1.15 C- 1.05 K-1.40

NOTE: These density readings can be on different sheets - don't need to on the same sheet!

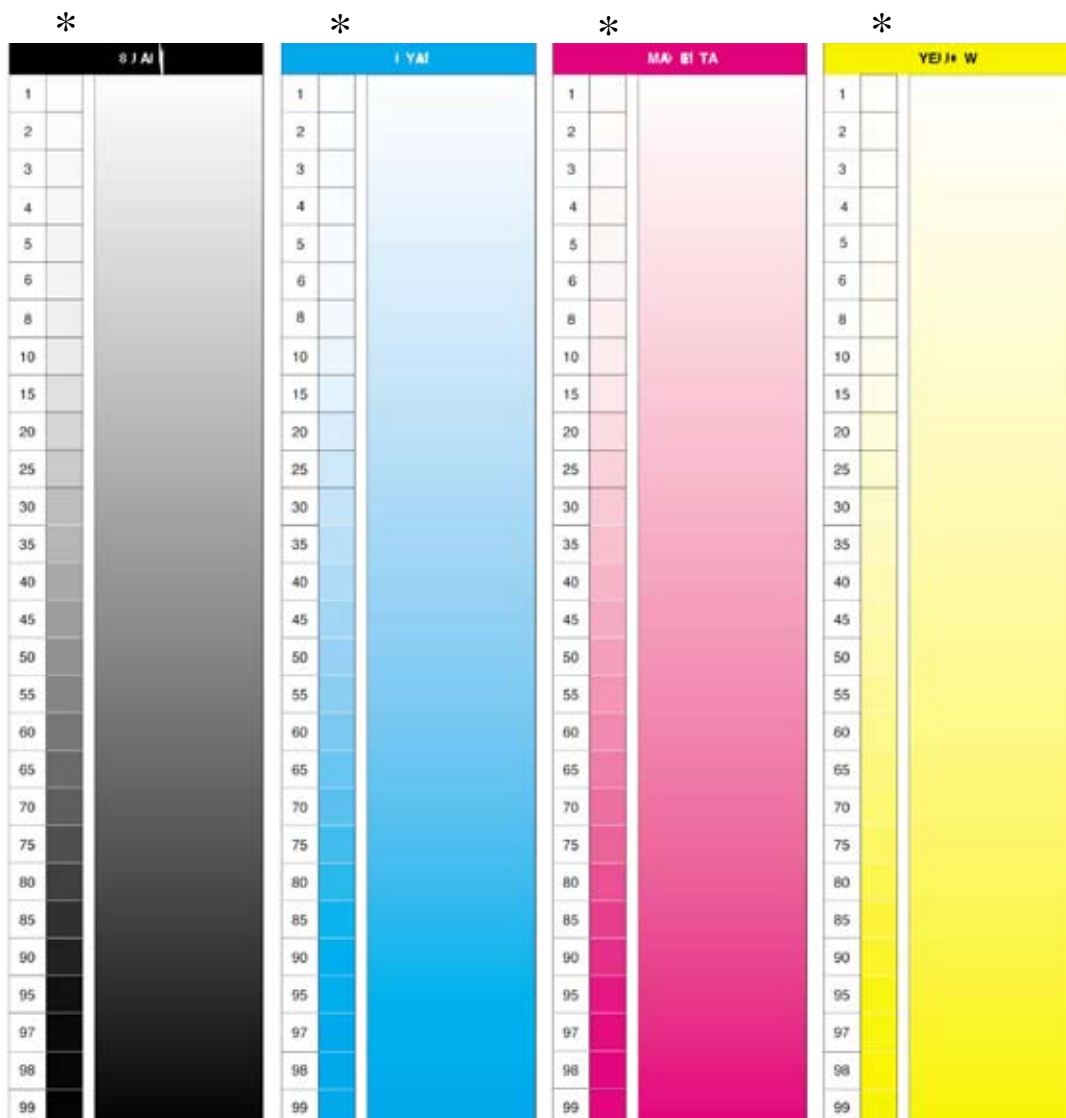
3- measure tone scales (dot area) record values.

4- place measured values into RIP for "MEASURED" values / use my numbers for "WANTED values".

5- remake plates (print to same densities) they should show adjustments to tonal area. The "WANTED" values should read correctly on the press sheet.

* The first set of plates- the sheets can be single sheets (all targets not necessary on same sheet).

Curved plates show 'color' - all density numbers need to be correct on same sheet.



* Measure density here - over Tone Scale.